



# Buxton Fire-Rescue

## Standard Operating Guideline

**Subject:** Energized Electrical Equipment/Lines (5)

**Section:** Utility Line Incidents (1)

**Date Approved:** October 31, 2014

*Nath R. Sles*



Page 1 of 3

### **Purpose:**

To establish a guideline for safe and effective operations when responding to and operating at incidents involving utility lines(s).

### **Response:**

A CODE 3 response shall be utilized while responding to utility line incidents including lights, siren, and with “Due Regard” for the safety of the crew and the public.

### **Guideline:**

#### Downed Utility Line/Pole -

- A) The assigned units shall remain at least two (2) pole lengths from a downed utility line or pole. It may be necessary to assign another piece of apparatus or fire police to control access on the other side of the incident. Approaching apparatus and personnel are urged to evaluate conditions before moving close to the scene. A line/pole snapping/breaking can cause significant damage down the line and affect responders further away than two (2) pole lengths (NOTE: it is easier to proceed to, than retreat from the scene).
- B) Deny access to the area until the problem has been mitigated by the utility company. A public address (PA) speaker should be utilized where applicable to instruct bystanders of moving to safe areas and away from the affected pole or line.
- C) Evaluate the scene and area surrounding for potential electrical conductors, in circumstances where the line(s) contact the conductor (e.g. guard rail, fence, utility pole(s)) restrict access to the area and increase the isolation distance by two (2) pole lengths prior to the conductor becoming electrified.
- D) Isolation distances may be increased on sharp corners, blind roadways or as deemed necessary by the Incident Commander (IC).
- E) At no time shall fire(s) be extinguished around downed power lines, without face to face confirmation from a Central Maine Power lineman or supervisor, that electricity has been shut down and isolated from the area.
- F) The IC should request the appropriate utility company to the scene. The following information should also be relayed: type of line, street address, and closest utility pole number, without getting closer than two (2) pole lengths from the downed line.

*Not R. Sle*

G) If there is adequate Fire Police to deny access and secure the scene, the IC may clear apparatus from the scene and transfer command to a Fire Police Officer at the scene.

Tree/branch on wires (remaining in the air) –

- A) Deny access to the area until the utility company has mitigated the problem, as deemed necessary by the incident (e.g. if it is likely that the utility line will be snapped and drop to the ground) the IC may require fire police and fire apparatus to standby until Central Maine Power arrives.
- B) The IC should request the appropriate utility company to the scene. The following information should also be relayed: type of line, street address, and closest utility pole number, without getting closer than two (2) pole lengths from the downed line.
- C) As deemed necessary by the IC, apparatus may be cleared if there is no immediate fire danger.

Contacts -

- Incidents involving transmission, primary, secondary or neutral lines contact Central Maine Power.
- Incidents involving telephone lines contact Fair Point Communications or OTT Communications.
- Incidents involving cable lines contact Time Warner Cable.

**DEFINITIONS –**

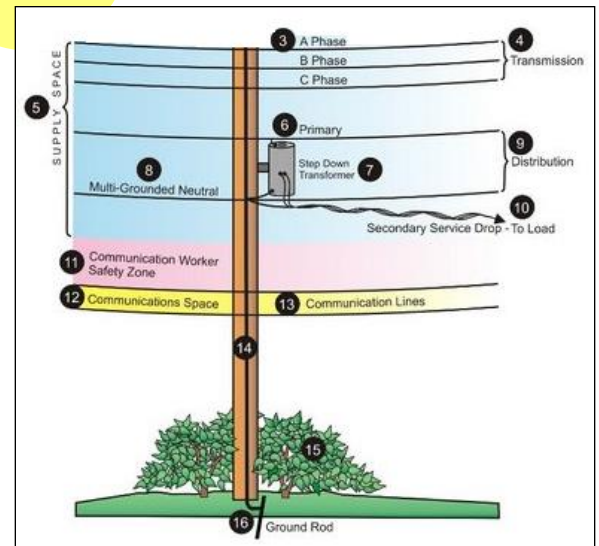
*Transmission (3-Phase):* A, B, C Phase (as listed in diagram) connects power plants to substations (110 kV or above).

*Primary:* Connects substation to electrical transformer (7200 volts).

*Neutral:* Neutral line for electrical system (ground).

*Secondary:* Connects transformer to building.

*Communication Line(s):* Telephone and cable lines.



**Personal Protective Equipment –**

Personnel responsible for directing traffic at the scene shall wear the following PPE as defined by [Administrative Policy 11.2 PPE Hazard Assessment](#).

<b><u>Traffic Control</u></b>	<i>Blunt Trauma, Environmental</i>	Helmet
	Struck by vehicle	Traffic Safety Vest or approved reflective Jacket
		ANSI Reflective Pants
		Reflective Gloves (Orange/Green as indicated)
	Slip	Gloves (weather related)
	Trip	Flashlight with wand
	Fall	Stop Slow Paddle
Hypo/Hyperthermia	Emergency Scene Ahead sign	